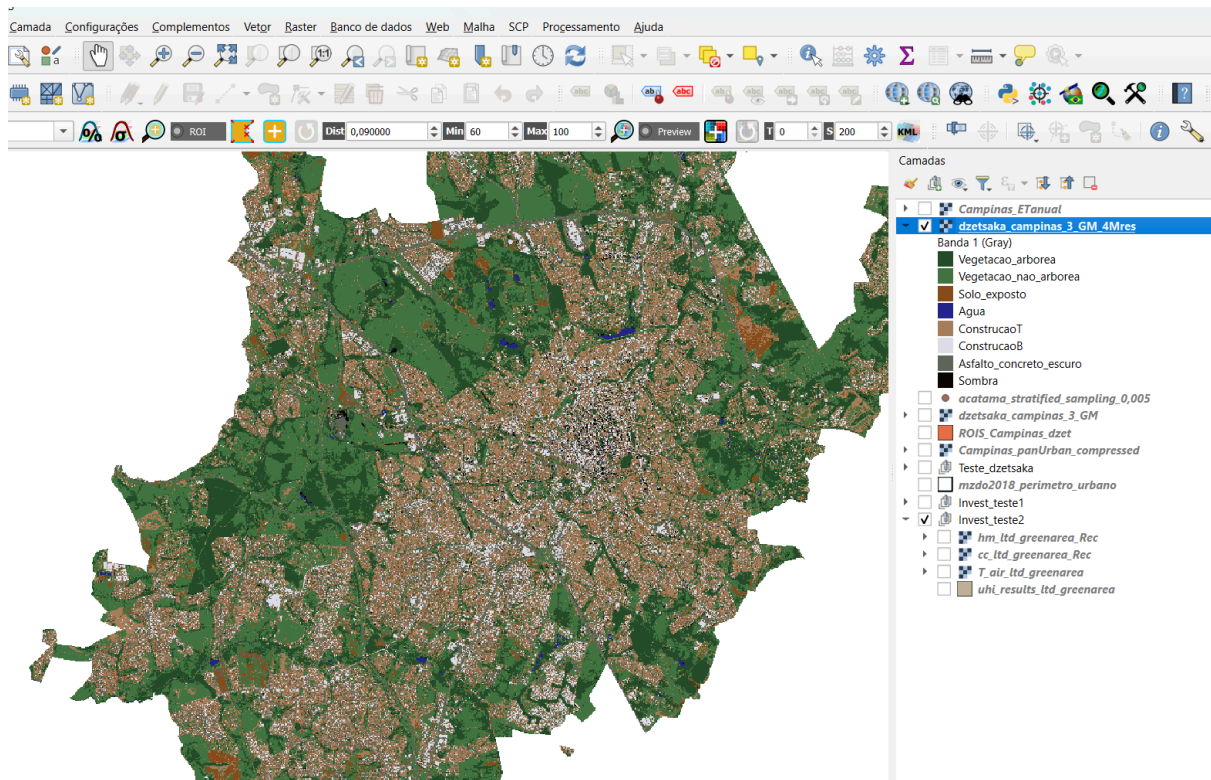
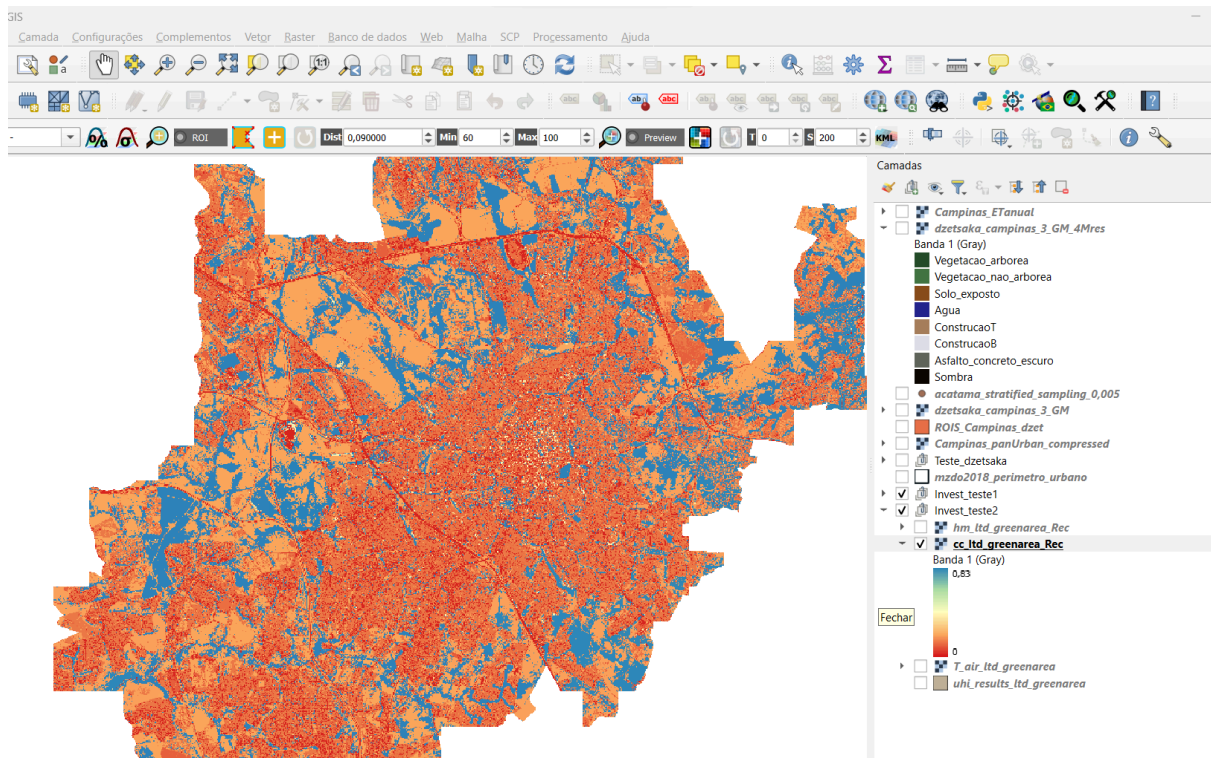


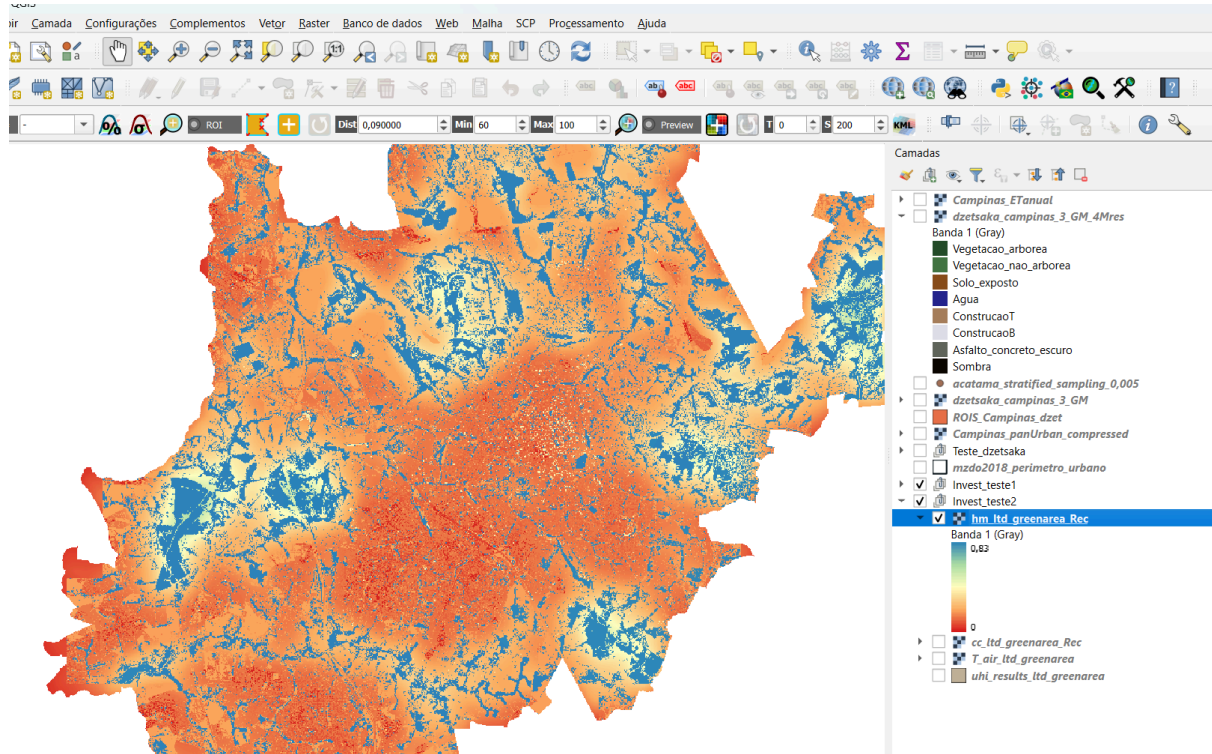
This is my LULC map. Class 1 (“Vegetacao_arborea”) is dark green. Class 6 (ConstrucaoB) is light gray, almost white. They cover a significant part of the map



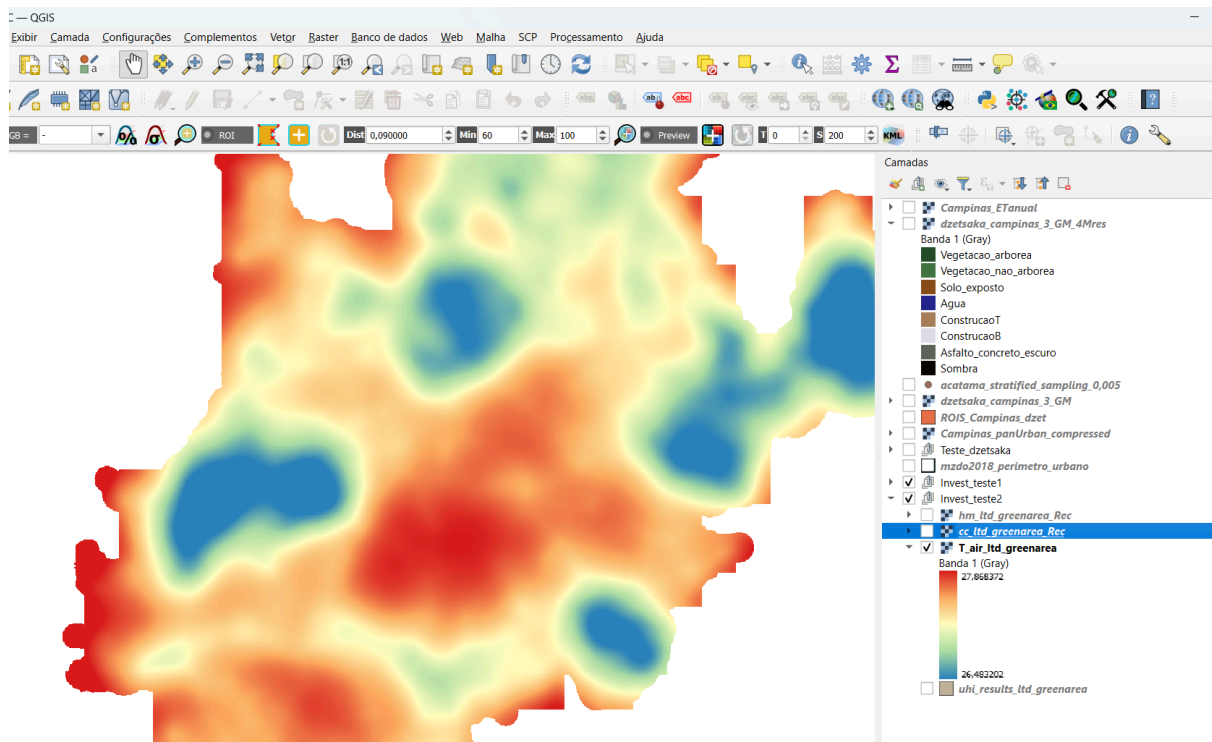
CC_tif



HM.tif



T_air.tif



uhi_result and attribute table

The screenshot shows the QGIS interface with a map of a brown area. A legend on the right lists various layers, including 'uhi_results_ltd_greenarea'. A table window is open over the map, displaying the attribute table for this layer. The table has 8 rows and 7 columns. The first row is highlighted in green.

gid	avg_cc	avg_tmp_v	avg_tmp_an	avd_eng_cn	avg_wbgt_v	avg
1	NULL	NULL	NULL	NULL	NULL	NULL
2	0,57328474405...	27,2913810301...	2,79138103015...	NULL	NULL	NULL
3	0,55932044982...	27,6445280671...	3,14452806710...	NULL	NULL	NULL
4	0,35148176993...	27,6552150680...	3,15521506801...	NULL	NULL	NULL
5	0,29333727729...	27,2011973926...	2,70119739260...	NULL	NULL	NULL
6	NULL	NULL	NULL	NULL	NULL	NULL
7	0,39733259732...	27,6946494973...	3,19464949738...	NULL	NULL	NULL
8	0,41536743966...	27,4895301551...	2,98953015513...	NULL	NULL	NULL